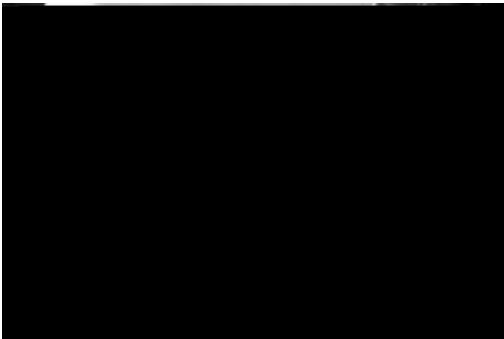


Unergonomic Laptops

The design of laptops violates a basic ergonomic requirement for a computer, namely, that the keyboard and screen are separated. In the early days of personal computing, desktop devices integrated the screen and keyboard into a single unit, and this resulted in widespread complaints of musculoskeletal discomfort.



By the late 1970s a number of ergonomic design guidelines were written, all recommending the separation of screen and keyboard. The reason is simple - with a fixed design, if the keyboard is in an optimal position for the user, the screen isn't; and if the screen is optimal, the keyboard isn't.

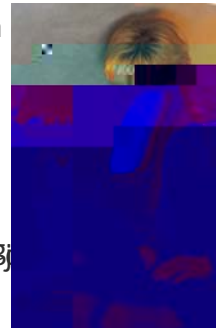
Laptop Posture

you a **full-time user** with the laptop as your main computer? All users should pay some attention to how they use their laptop, but full-time users are at greater risk of developing musculoskeletal disorder.

Occasional Users

Because the neck/head posture is controlled by a larger muscle group, you are better off sacrificing neck posture rather than wrist posture:

- Find a chair that is comfortable, one in which you can sit back while positioning the laptop in your lap for the most neutral wrist posture that you can achieve.
- Angle the laptop screen 0-30 degrees with the least amount of neck deviation.

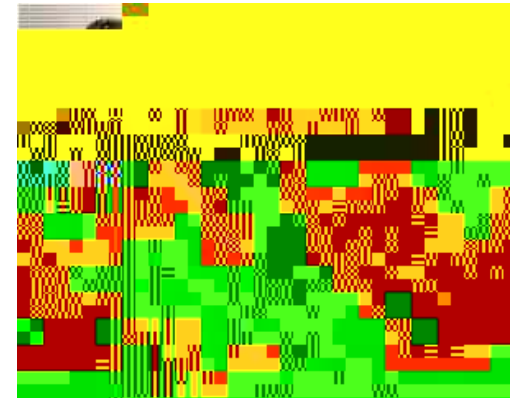


Full-time Users

If you use your laptop at work as your main computer, you should:

- Position it on your desk/work surface in front of you so that you can see the screen without bending your neck. This may require that you raise the laptop off the desk using a stable support surface, such as a computer monitor pedestal.

- Use a separate keyboard and mouse. These devices may be plugged into the back of the laptop or to a docking station.
- Use the following ten tips for a perfect fit:



1. Position head so ears are over the shoulder
2. Monitor 18-24 inches from eyes
3. Monitor in direct line of sight and at correct height
4. Shoulders relaxed
5. Upper arm in line with torso
6. Elbows at 90 degrees and close to the torso
7. Wrist in neutral posture
8. Mouse on same plane as keyboard
9. Good lumbar support
10. Feet flat on the floor or on foot-rest

Laptop Dimensions

Many laptops offer large screens (15" plus) which can work as desktop replacements (giving the viewing area of a 17" monitor). Consider where you will most be using your laptop to help you choose the best size. The larger the screen, the more difficult it will be to use in mobile locations (e.g., airplane, car, train). There are a number of smaller notebook and ultraportable laptops on the market. Consider the issues of screen size and screen resolution. The smaller the laptop, the smaller the keyboard, so make sure that you can comfortably type on a keyboard that may be only 75% the size of a regular keyboard.

Laptop Weight

If you are a mobile professional who will be frequently transporting your laptop, think about the weight of the system. By the word "system" we mean the weight of the laptop plus the re

OFFICE ERGONOMICS

Tips for Using a Laptop Computer

MEMIC	MEMIC Indemnity Company
261 Commercial St	1750 Elm St
PO Box 11409	Suite 500
Portland ME 04104	Manchester NH 03104

Phone: 800-660-3300	866-636-4292
Fax: 207-791-3333	603-695-6601

www.memic.com